


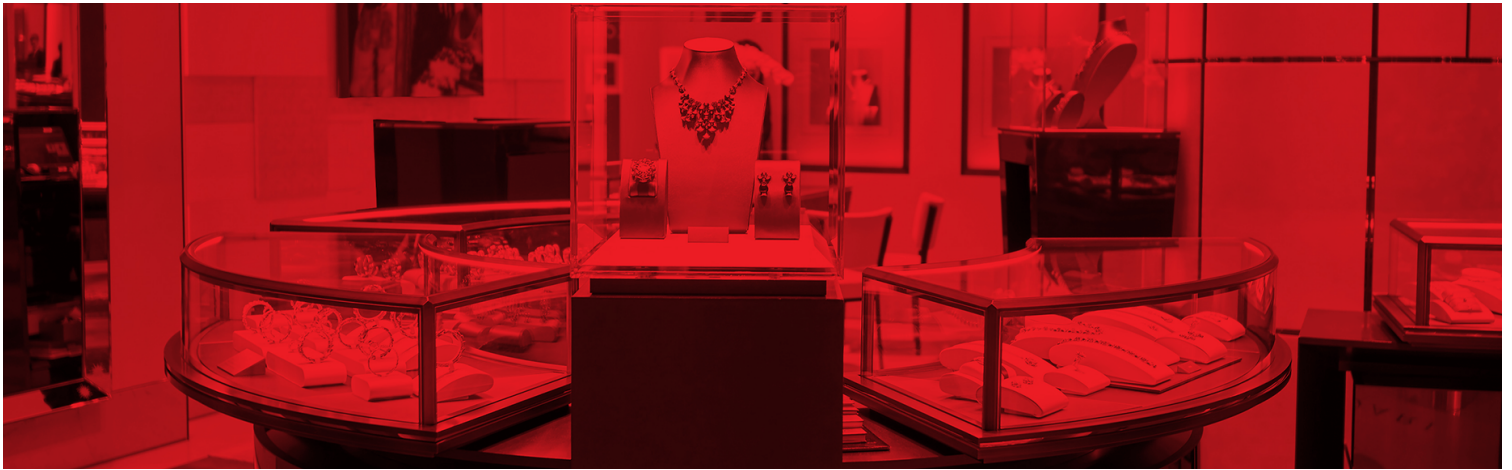
Jewelry

Yes, We Are Open

Blueprint for Success



Your in-store marketing
supply chain partner



Safely Open for Business: The Importance of Signage + Social Distancing Solutions During and After COVID-19

As states begin to ease the restrictions placed on businesses during the COVID-19 crisis, responding to the social distancing rules in place while attracting customers can be a challenge. Before reopening, your business will need effective ways to communicate safety to your customers and employees — all of which will require effective signage and more.

Communicating Safety

Businesses have taken extraordinary steps to protect employees and help ensure customers act responsibly according to CDC recommendations for social distancing. Directional signage, PA announcements, floor decals and other metering techniques are being implemented with safety as the primary focus. “Clean Cart” protocols, gloves, masks, and modified hours are quickly becoming the norm. Some of the most important messages that need to be conveyed on signage include:

- Online availability
- Designated seating
- Social distancing (6’ rule)
- Hours of operation or closures
- CDC guidelines and local laws
- Number of customers allowed inside
- Where to stand and traffic directionals
- Reminders to wash hands; wear masks

We don’t just help brands deliver smart marketing, we help you **Market Smarter.**

Learn more about our solutions at:
www.kdmpop.com | 855-232-7799 | infosales@kdmpop.com

PRINT
FULFILLMENT + DISTRIBUTION
STORE ENVIRONMENTS
MERCHANDISE DISPLAYS
BRANDING

www.kdmpop.com

When maintaining six feet of distance is not possible, businesses have turned to partitions and barriers to ensure safety for their customers and employees. From DIY pop-up countertop sneeze guards to semi-permanent plexiglass barriers with pass-through windows — businesses have a variety of options to choose from during this critical time.

Create A Safe Experience

Directional floor graphics, similar to what you see at grocery stores, can help guide employees around safely. Additionally, floor graphics can assist with keeping social distance around seating, common areas and front entrances.

The plexiglass barriers that are now a common sight at checkout counters can be installed to keep employees and customers safe as well. Desk partitions are a great option for reception areas and client seating, acting as a cough and sneeze guard when welcoming and consulting with clients. Additionally, safety partitions can serve as a divider between shared client seating.

Reminding employees and customers to keep their distance, wash their hands and cover their mouths when coughing or sneezing can be achieved with targeted signage. Consider aligning your signage with the tone and design of your brand to keep the aesthetic consistent. Installing hand sanitizing stations and providing employees gloves and masks can further encourage personal hygiene.

The New Normal

As new habits are created and businesses adapt to meet customer needs and public health requirements, this is an opportunity for your brand to express gratitude and empathy. Something as simple as thanking customers for their business will leave a lasting impression. Review all of our retail social distancing solutions — including print, partitions and barriers — all designed to mitigate risk during these uncertain times.

We don't just help brands deliver smart marketing, we help you **Market Smarter.**

Learn more about our solutions at:
www.kdmpop.com | 855-232-7799 | infosales@kdmpop.com

PRINT
FULFILLMENT + DISTRIBUTION
STORE ENVIRONMENTS
MERCHANDISE DISPLAYS
BRANDING

www.kdmpop.com

Express to your customers that “Yes, We Are Open”. KDM makes extending the design of an established outdoor environment easy for franchises. Communicate your services while also adhering to CDC’s safety guidelines.

- Floor stanchion sign
- Retractable banner
- Poster
- Banner
- Feather flag
- Yard sign
- Window cling
- A-frame banner

HELP DO YOUR PART



Wash hands often



Avoid close contact



Wear face mask at all time



Cover coughs and sneezes



Disinfect work station



Be mindful
of your
environment.

Stay Safe.



We don't just help brands deliver smart marketing, we help you **Market Smarter.**

Learn more about our solutions at:
www.kdmpop.com | 855-232-7799 | infosales@kdmpop.com

PRINT
 FULFILLMENT + DISTRIBUTION
 STORE ENVIRONMENTS
 MERCHANDISE DISPLAYS
 BRANDING

www.kdmpop.com



Partition + Barrier Solutions

Follow the CDC's safe 6' social distancing guidelines by creating a barrier for countertops and desks. These partitions and barriers are great for providing extra protection while connecting with your client.

- Customized to your needs and style
- Effortless to install
- Optional extended wings



We don't just help brands deliver smart marketing, we help you **Market Smarter.**

Learn more about our solutions at:
www.kdmpop.com | 855-232-7799 | infosales@kdmpop.com

PRINT
FULFILLMENT + DISTRIBUTION
STORE ENVIRONMENTS
MERCHANDISE DISPLAYS
BRANDING

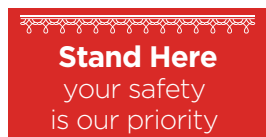
www.kdmpop.com

KDM's Social Distancing Solutions can help guide your customers to shop smartly and safely. Our design team will work with you to create a customized path that will not only adhere to the CDC's 6-feet social distancing guidelines but also enhance your branded environment.

- Floor stanchion sign holder
- Banner
- Directional tape



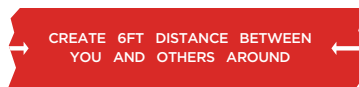
Directional Floor Graphics:



24" W x 15" H



15" Diameter



Floor Tape:
3.75" W x 6' L



15" W x 18" H

We don't just help brands deliver smart marketing, we help you **Market Smarter.**

Learn more about our solutions at:

www.kdmpop.com | 855-232-7799 | infosales@kdmpop.com

PRINT
FULFILLMENT + DISTRIBUTION
STORE ENVIRONMENTS
MERCHANDISE DISPLAYS
BRANDING

www.kdmpop.com

Display Covid-19 essential signage around restrooms and facilities as a reminder to your employees and customers. Provide PPE kits to employees to help reduce contact throughout your location.

- 1 Hand sanitizer stand
- 2 Digital hand sanitizer dispenser
- 3 Personal hand sanitizer
- 4 Disposable face mask
- 5 Sanitary no-touch key
- 6 Essential safety signage
- 7 Infrared forehead thermometer
- 8 Welcome back PPE kit



6



8



We don't just help brands deliver smart marketing, we help you **Market Smarter.**

Learn more about our solutions at:
www.kdmpop.com | 855-232-7799 | infosales@kdmpop.com

PRINT
 FULFILLMENT + DISTRIBUTION
 STORE ENVIRONMENTS
 MERCHANDISE DISPLAYS
 BRANDING

www.kdmpop.com

Ready to Market Smarter?

Discover all of the ways we can serve you.

www.kdmpop.com

**POP Print
Fulfillment + Distribution
Store Environments
Merchandise Displays
Branding**

