

kdm.

Schools

# Yes, We Are Open

Blueprint for Success

Your in-store marketing  
supply chain partner

## Safely Go Back to School: The Importance of Social Distancing Solutions for Educational Institutions

### Keeping Your Distance

Keeping your distance in tight quarters can be a challenge, but not impossible with a little print ingenuity. Directional floor graphics, similar to what you see at grocery stores, can help guide students and staff members around your school campus safely. Additionally, floor graphics can assist with keeping social distance around desks, common areas and even in elevators.

### Barriers For Success

As the government's phased approach to reopening progresses, additional safety precautions are needed to ensure social distancing. The plexiglass barriers that are now a common sight at checkout counters can be installed to keep teachers and administrative staff safe as well. Acting as a cough and sneeze guard, desk partitions are a great option for front offices, classrooms, and collaborative areas. Additionally, safety partitions can serve as a divider between combined seating and shared desks.

### Encouraging Personal Hygiene

Reminding everyone to keep their distance, wash their hands and cover their mouths when coughing or sneezing can be achieved with targeted signage. To be effective, place signage in high-traffic areas such as building entrances, elevators, teacher lounges, and cafeterias. Consider aligning your signage with the tone and design of your school's logo or school colors to keep your brand identity consistent throughout the campus. Installing hand sanitizing stations and providing gloves and masks can further encourage personal hygiene.

While educational institutions continue to keep a pulse on what's needed to keep everyone safe, KDM is doing the same. We've adapted our workplace to comply with social distancing standards and designed new product offerings to meet customers where they are in the reopening process. Review all of our social distancing solutions — including print, partitions and barriers — all designed to mitigate risk during these uncertain times.

We don't just help brands deliver smart marketing, we help you **Market Smarter.**

Learn more about our solutions at:  
[www.kdmpop.com](http://www.kdmpop.com) | 855-232-7799 | [infosales@kdmpop.com](mailto:infosales@kdmpop.com)

PRINT  
FULFILLMENT + DISTRIBUTION  
STORE ENVIRONMENTS  
MERCHANDISE DISPLAYS  
BRANDING

[www.kdmpop.com](http://www.kdmpop.com)

Welcome your students, teachers and staff members back with KDM's print solutions. With our customizable print options, we can produce high-quality graphics that promote safety and team spirit!

- Banner
- Window Cling
- Yard Sign
- A-Frame Banner
- Feather Flag



We don't just help brands deliver smart marketing, we help you **Market Smarter.**

Learn more about our solutions at:  
[www.kdmpop.com](http://www.kdmpop.com) | 855-232-7799 | [infosales@kdmpop.com](mailto:infosales@kdmpop.com)

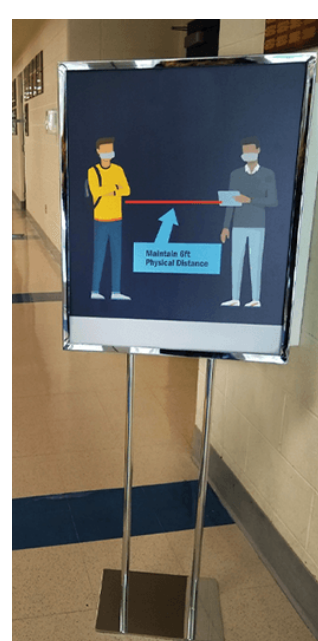
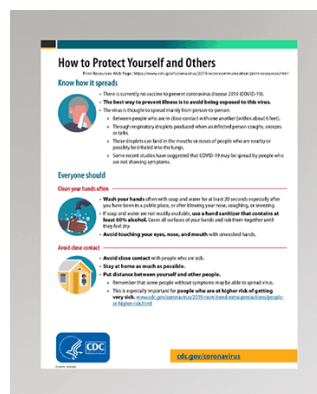
PRINT  
 FULFILLMENT + DISTRIBUTION  
 STORE ENVIRONMENTS  
 MERCHANDISE DISPLAYS  
 BRANDING

[www.kdmpop.com](http://www.kdmpop.com)



Remind your students and staff about the importance of hygiene. With our print-on-demand options, we can clearly deliver a message of health and safety with effect print solutions.

- Floor Poster Standee
- Retractable Banner
- Poster
- Acrylic Sign Holder
- Magnetic Clings
- Table Tents
- Seat Blocker



We don't just help brands deliver smart marketing, we help you **Market Smarter.**

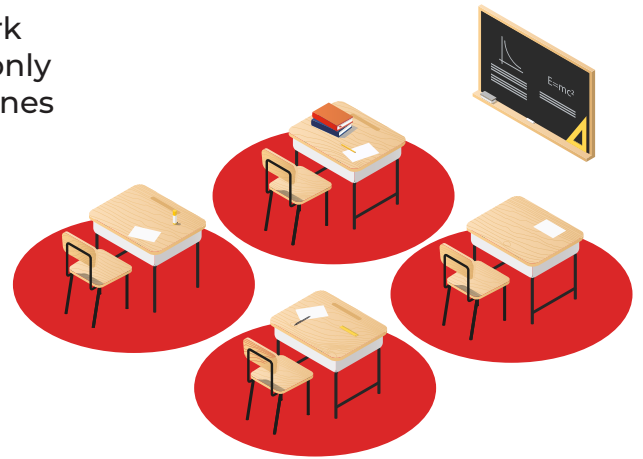
Learn more about our solutions at:  
[www.kdmpop.com](http://www.kdmpop.com) | 855-232-7799 | [infosales@kdmpop.com](mailto:infosales@kdmpop.com)

PRINT  
 FULFILLMENT + DISTRIBUTION  
 STORE ENVIRONMENTS  
 MERCHANDISE DISPLAYS  
 BRANDING

[www.kdmpop.com](http://www.kdmpop.com)

KDM's Social Distancing Solutions can help guide your students and staff members to a smarter and safer learning experience. Our design team will work with you to create a customized path that will not only adhere to the CDC's 6-foot social distancing guidelines but also enhance your branded environment.

- Floor Graphics
- Vinyl Graphics
- Crowd Control Stanchion
- Safe 6' Carpet Floor Graphic



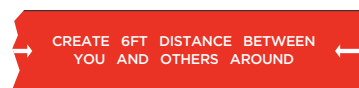
## Directional Floor Graphics:



24" W x 15" H



15" Diameter



Floor Tape:  
3.75" W x 6' L



15" W x 18" H

We don't just help brands deliver smart marketing, we help you **Market Smarter.**

Learn more about our solutions at:  
[www.kdmpop.com](http://www.kdmpop.com) | 855-232-7799 | [infosales@kdmpop.com](mailto:infosales@kdmpop.com)

PRINT  
FULFILLMENT + DISTRIBUTION  
STORE ENVIRONMENTS  
MERCHANDISE DISPLAYS  
BRANDING

[www.kdmpop.com](http://www.kdmpop.com)





## Partition + Barrier Solutions

Follow the CDC's social distancing guidelines by creating a barrier for open layouts and classroom desks. These are great for group collaboration while also creating individual space.

- Customized to your needs
- Effortless to install
- Add your school's logo or school colors!



We don't just help brands deliver smart marketing, we help you **Market Smarter.**

Learn more about our solutions at:

[www.kdmpop.com](http://www.kdmpop.com) | 855-232-7799 | [infosales@kdmpop.com](mailto:infosales@kdmpop.com)

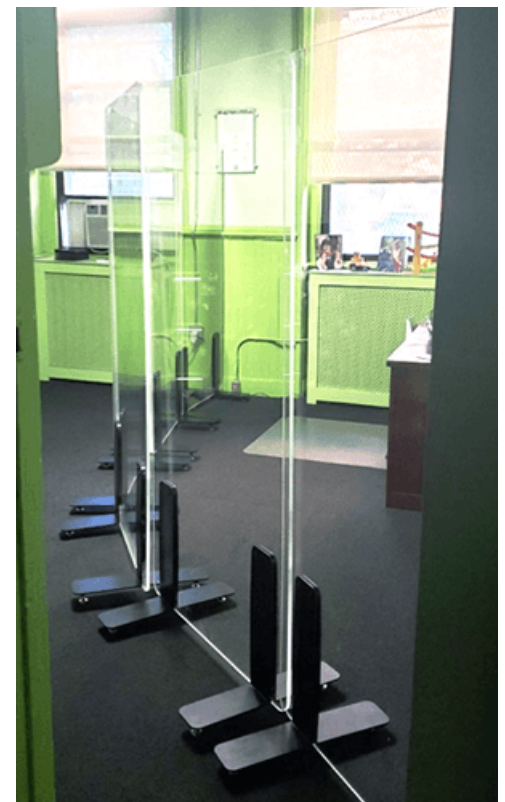
PRINT  
FULFILLMENT + DISTRIBUTION  
STORE ENVIRONMENTS  
MERCHANDISE DISPLAYS  
BRANDING

[www.kdmpop.com](http://www.kdmpop.com)



kdm.

# Classroom Partition + Barriers

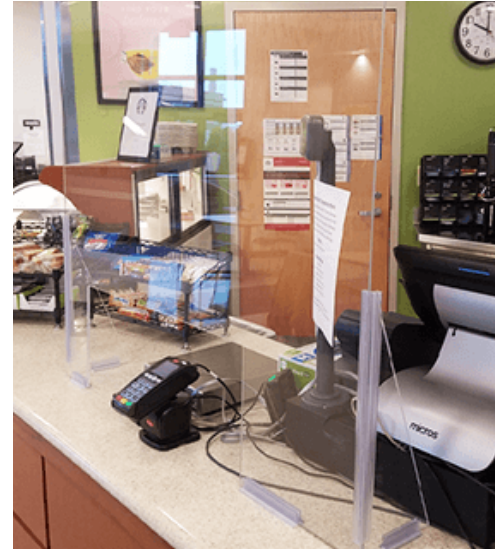




# kdm. Office + Lobby Partitions + Barriers







Enforce safe practices by checking arrivals' temperatures with infrared forehead thermometer and by supplying extra sanitation products throughout your school.

- Hand Sanitizer Stand
- Digital Hand Sanitizer Dispenser
- Infrared Forehead Thermometer

Provide students, teachers and staff members with a customizable Welcome Back Kit featuring essential personal protective equipment:

- Welcome Back PPE Kit
- Branded Personal Hand Sanitizer
- Branded Face Masks
- Sanitary No-Touch Key
- Disposable Hand Wipes



We don't just help brands deliver smart marketing, we help you **Market Smarter.**

Learn more about our solutions at:  
[www.kdmpop.com](http://www.kdmpop.com) | 855-232-7799 | [infosales@kdmpop.com](mailto:infosales@kdmpop.com)

PRINT  
 FULFILLMENT + DISTRIBUTION  
 STORE ENVIRONMENTS  
 MERCHANDISE DISPLAYS  
 BRANDING

[www.kdmpop.com](http://www.kdmpop.com)



## Ready to Market Smarter?

Discover all of the ways we can serve you.

[www.kdmpop.com](http://www.kdmpop.com)

**POP Print  
Fulfillment + Distribution  
Store Environments  
Merchandise Displays  
Branding**

